



BEAN PROCESSOR CATALOG

2020

 PureLine Seeds, Inc

PURE LINE TEAM



Ethan Rosen

President

📞 (608) 358-5930

✉️ erosen@purelineseed.com



Bill Pfeil

Board Member

📞 (608) 335-5920

✉️ bpfeil@purelineseed.com



Brian Olson

General Manager

📞 (509) 760-2374

✉️ bolson@purelineseed.com



A SEASON OF CHANGE

Torey and I are honored to be the new owners of Pure Line Seeds, continuing as a family owned business since 1948. We are grateful to our dedicated team that works diligently to bring prompt, high-quality services. We look for opportunities to expand and improve our products and services for our current and future business with you.

We want to give a special thanks to Bill Pfeil who has led this company to where we are today. We're also grateful for the knowledge that has been passed on by people like Jim Krier and Dick Lowe, who are transitioning away from the business. It is comforting to know that they are only a phone call away.

We look forward to working with your company and seeing you at our trials this summer.

President



Greg Schad

North Central Sales Manager

📞 (507) 259-0389

✉️ gschad@purelineseed.com



Hal Blanton

Pacific Northwest Sales Manager

📞 (509) 205-9018

✉️ hblanton@purelineseed.com



Barry Cavanagh

Canadian Sales Manager

📞 (226) 688-9247

✉️ bcavanagh@purelineseed.com



James D. Eckert

Processing Sales Representative

📞 (608) 977-4522

✉️ jeckert@purelineseed.com



Travis Meiklejohn

Eastern U.S. Sales Manager

📞 (410) 924-7353

✉️ tmeiklejohn@purelineseed.com



Benjamin Hughey

Research Director

📞 (608) 438-2554

✉️ bhughey@purelineseed.com



Eliane Bodah

Plant Breeder

📞 (315) 416-8882

✉️ ebodah@purelineseed.com



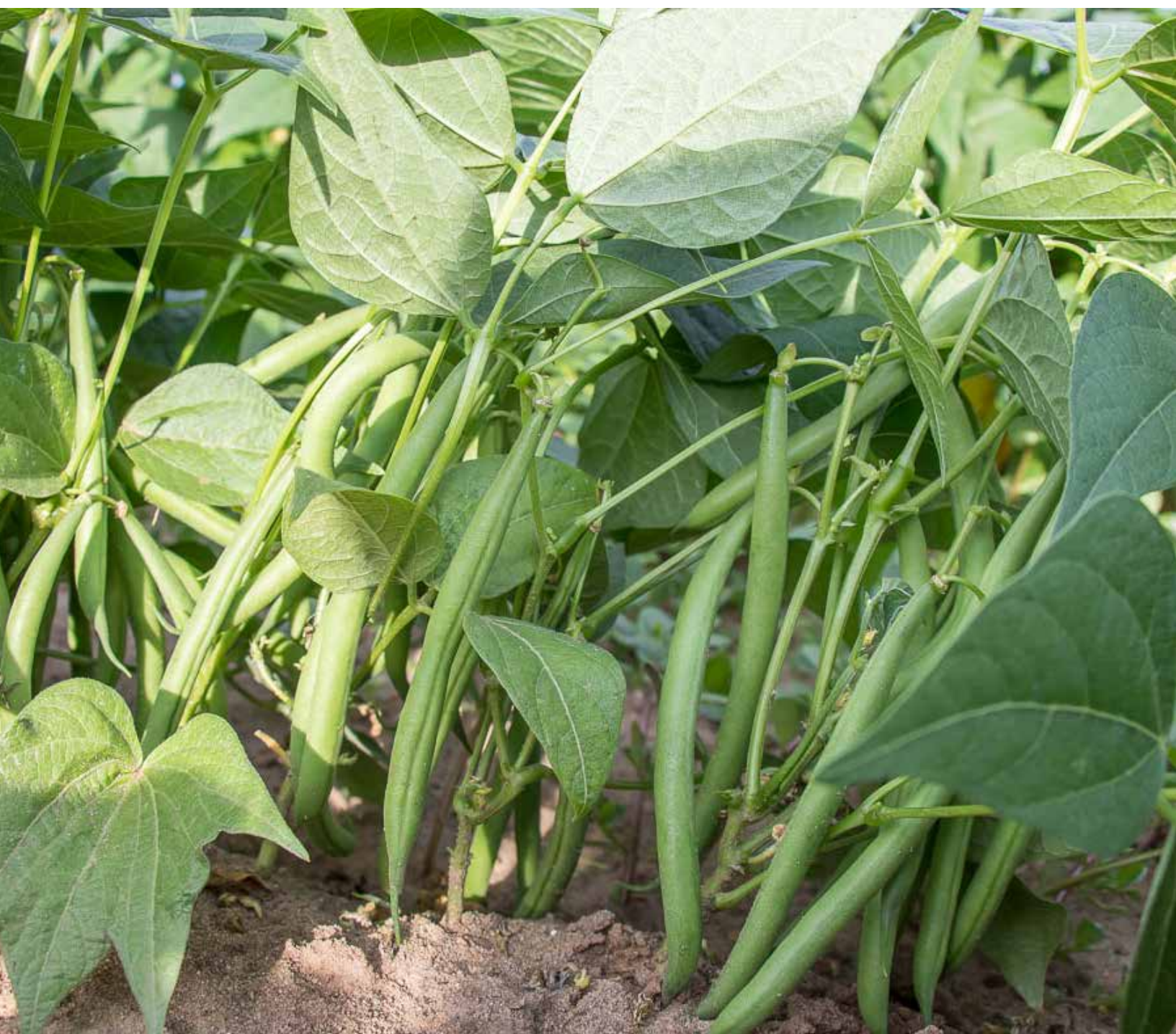
Kassie Favaro

Office Manager

📞 (509) 349-2374

✉️ kfavaro@purelineseed.com

BEANS



DOMINATOR

Dominator is an attractive early-main season variety. Pods are dark in color, 0.5 inch in diameter and 6 inches long. A great bean for the fresh or a processing market.



ACCELERATE

Accelerate is a Pure Line Seeds introduction in cooperation with the University of Wisconsin. Accelerate is a large sieve bean selected for its yield and disease package. Accelerate is known for its large root mass which helps with production. Taking approximately 53-54 days to mature, it is an excellent choice for early season as well as full season produce. Does very well in cool climates.



FERRARI

Ferrari was developed for the three sieve market. Ferrari is a glossy dark green podded variety. The plant habitat is a smaller bush with pods being set high in the bush. Since its introduction, Ferrari has become a mainstay variety for many processing and fresh market growers.



BBL 156

BBL156 is a mainstay processing variety. BBL 156 is a majority 4 sieve variety with some 5 sieve beans.



SASSY

Sassy was developed for small whole bean market by Pure Line Seeds. This outstanding whole bean competes for the leading spot every year with its high quality, early vigor, outstanding yields and great recovery.



GB 72

GB 72 is a clean 4-5 sieve whole bean. A tremendous yielding stand-by that works great for fancy cuts.



SABA

This is a 4 sieve bean that produces medium green pods on a very healthy plant with resistances to BCMV, Anthracnose, and Halo Blight. This variety has shown great potential in both the fresh and processing market.



ROMA II

Roma II is a mainstay flat bean at Pure Line Seeds because of its great disease package and distinct flavor. This bean is string-less and maintains its green color during processing and canning. A good choice for anyone looking for a dependable and high-yielding flat bean.



Variety	DISEASE INFORMATION															
	Average Days to Maturity	Pod Length Inches	Pod Color	Percent 1-3 Sieve	Percent 4 Sieve	Percent 5 Sieve	BCMV	Brown Spot	Curly Top	Lygus	Heat	Halo Blight	Rust	Anthracnose	Root Rot	CMV
GREEN BEANS																
Dominator	53	5.5-6"	VD	7	75	18	R									
Accelerate	54	6.5"	M	10	40	50	R	T	T						T ² ,T ³	
Ferrari	55	5"	D-Gloss	40	60	0	R							R		T
BBL 156	56	5.9	M	10	50	40	R									
Sassy	57	4"	M	40	60	0	R		R					R		
GB 72	57	5.5	M	25	60			R			T	R	R			
Saba	60	5"	M	35	55	10	R					R		R		
WAX (YELLOW) BEANS																
Goldrush	55	5.5"	D	20	50	40	R		R							
ITALIAN (FLAT) BEANS																
Roma II	58	6	M					R ¹		T						

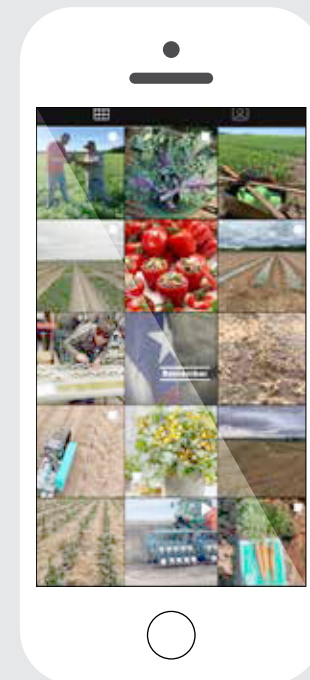
1 = strains BV1, NY 15, Western 2 = Fusarium Root Rot M = Medium, D = Dark, VD = Very Dark








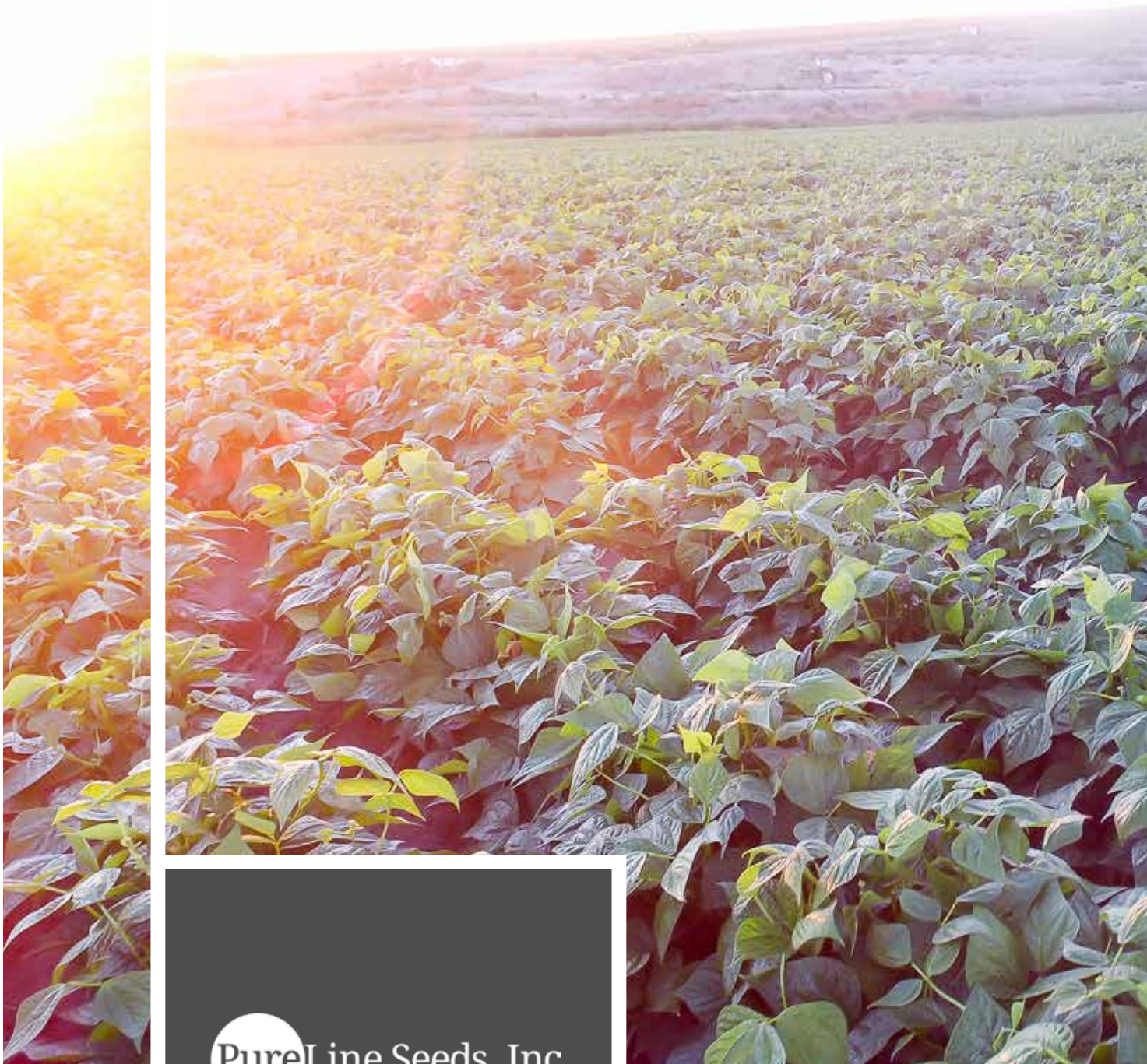
**PROUDLY FAMILY OWNED
AND OPERATED SINCE
1948**

TRIAL LOCATIONS

We have three primary trial locations in the United States and one in Canada. Each location allows us to see how our varieties perform in different growing climates. Each area has different customer bases who are looking for unique requirements.



-  PureLineSeed
-  @purelineseeds
-  @PureLineSeeds
-  info@purelineeed.com
-  pure-line-seeds-inc



PureLine Seeds, Inc

