



PEA PROCESSOR
CATALOG

2020



PureLine Seeds, Inc

PURE LINE TEAM



Ethan Rosen

President

📞 (608) 358-5930

✉️ erosen@purelineseed.com



Bill Pfeil

Board Member

📞 (608) 335-5920

✉️ bpfeil@purelineseed.com



Brian Olson

General Manager

📞 (509) 760-2374

✉️ bolson@purelineseed.com



A SEASON OF CHANGE

Torey and I are honored to be the new owners of Pure Line Seeds, continuing as a family owned business since 1948. We are grateful to our dedicated team that works diligently to bring prompt, high-quality services. We look for opportunities to expand and improve our products and services for our current and future business with you.

We want to give a special thanks to Bill Pfeil who has led this company to where we are today. We're also grateful for the knowledge that has been passed on by people like Jim Krier and Dick Lowe, who are transitioning away from the business. It is comforting to know that they are only a phone call away.

We look forward to working with your company and seeing you at our trials this summer.

President



Greg Schad

North Central Sales Manager

📞 (507) 259-0389

✉️ gschad@purelineseed.com



Hal Blanton

Pacific Northwest Sales Manager

📞 (509) 205-9018

✉️ hblanton@purelineseed.com



Barry Cavanagh

Canadian Sales Manager

📞 (226) 688-9247

✉️ bcavanagh@purelineseed.com



James D. Eckert

Processing Sales Representative

📞 (608) 977-4522

✉️ jeckert@purelineseed.com



Travis Meiklejohn

Eastern U.S. Sales Manager

📞 (410) 924-7353

✉️ tmeiklejohn@purelineseed.com



Benjamin Hughey

Research Director

📞 (608) 438-2554

✉️ bhughey@purelineseed.com



Eliane Bodah

Plant Breeder

📞 (315) 416-8882

✉️ ebodah@purelineseed.com



Kassie Favaro

Office Manager

📞 (509) 349-2374

✉️ kfavaro@purelineseed.com

PEAS



First-Early Variety

Spring has been the benchmark early variety in the industry for many years. It matures in 55 days with a large berry size.

SPRING



Second Early Variety

PLS 534 is a second early afile developed at the Pure Line Seeds research facility. Double pods filled with 8-9 berries create fantastic yields of choice berries. This pea is resistant to Fusarium Wilt race 1, race 2, and Fusarium Root Rot.

PLS 534



Second Early Variety

M-14 is a strong stemmed normal vine that will stay standing through green pea harvest. This variety also makes for a picturesque field with so many bright green pods hanging on that classic Dick Lowe-style dark blue vine.

M-14



Mid-Season Variety

One of our newest peas to enter the commercial phase, 613 has a very consistent pod set with up to 12 berries per pod! Another great yielding 3 sieve pea perfect for the shifting demands of the modern market.

PLS 613



PLS 167

Mid-Season Variety

This variety has consistently been a top yielding variety across the country since its release. The ever increasing importance of 167's strong field tolerance to Downy Mildew keeps this variety in high demand. Harvest early for an even smaller berry.



PLS 196

Late-Season Variety

Our 196 is a long podded, late season, dark blue vined variety. This variety has a very strong pod set consistently setting two pods per peduncle while occasionally throwing a third that helps to boost yields. 196's strong field tolerance to Downy Mildew ensures good pod-fill of quality berries as well.



PLS 595

Late-Season Variety

PLS 595 is a new introduction by Pure Line Seeds that is exciting for the size of the pods and yields at harvest. Plants will produce two long pods per node, with on average 11 berries in each pod. Fresh market customers are raving about the ease of hand picking due to high set of pods in plant and upright plant type.



DANCER

Late-Season Variety

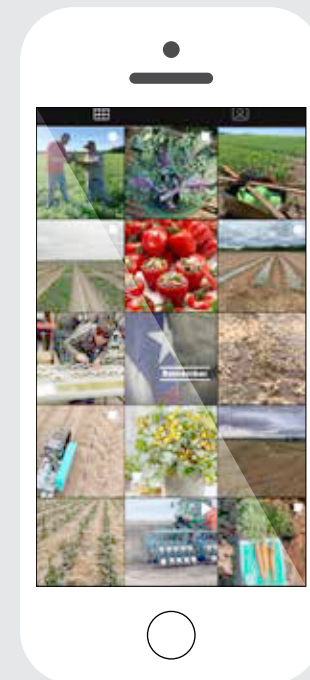
Dancer is a very promising, highly anticipated, new release from Pure Line Seeds. This variety primarily sets three to four pods per node with 3-3.2 sieve berries. The architecture on this line is beautiful with a pod set concentrated higher up in the canopy. This means better light exposure resulting in a uniform robust color in your final product. Dancer comes with a great disease package including strong field tolerance to Downy Mildew.




Variety	CHARACTERISTICS										DISEASE INFORMATION							
	Approx. Days to Maturity	Approx. Heat Units to Maturity	Node at First Bloom	Vine Type	Average Sieve Size	Average Plant Height, In	Average Pods Per Node	Fusarium Wilt Races	Fusarium RR	Pythium RR	Aphanomyces RR	Bean Leaf Roll	Pea Enation	Powdery Mildew	Downy Mildew	Heat		
First Early																		
Eldorado	54		10	Normal				R ¹						R				
Spring	55	1120	9	Normal	4.10	22-24	1-2	R ¹										
Strike	56	1140	9	Normal	3.95	22-24	1-2			T								
Second Early																		
Misty	57	1180	9-10	Normal	3.85	17-19	2	R ¹										
Prevail	57	1180	9	Afila	3.60	18-20	2	R ¹										
PLS 534	58	1200	9-10	Afila	3.80	20-22	2	R ¹	T					T	T			
M-14	58	1240	9-10	Normal	3.70	19-20	2-3	R ¹							T			
11P42	58	1275	11-12	Afila	3.70			R ¹										
Topps	60	1260	10-11	Normal	3.50	22-23	2	R ¹	T				R					
PLS 226	61	1270	11-12	Afila	3.30	18-22	2-3	T ¹ , R ²						R				
Saltingo	61	1300		Afila	3.50			R ¹					T	R	T			
PLS 228	61	1340	11-12	Afila	3.54	18-22	2-3	T ¹ , R ²						R				
Idalgo	63	1340		Afila	3.40	22-23	2	R ¹					T	R	T			
Mid-Season																		
PLS 566	64	1430	11-12	Afila	3.70	22-24	2	R ¹ , R ²						R	T			
PLS 167	65	1450	11-12	Afila	3.06	22-24	2-3	R ¹ , R ²						R	T			
PLS 613	65	1450	11-12	Afila	3.10	22-24	2	R ¹						R				
PLS 560	67	1430	15	Afila	3.20	18-22	2	R ²			T			R				
Bolero	68	1460	14	Normal	4.0	28-30	2-3	R ¹										
Serge	68	1460	14	Afila	3.60	26-28	2	R ¹ , R ⁵	T					R	R			
PLS 602	68	1470		Afila	3.20	18-22	2-3	R ¹ , R ²					T	R	T			
PLS 134	69	1480	14	Afila	3.60	25-27	2	R ¹						R	R			
PLS 251	68	1480	14		3.40			R ¹						R	R	T		
Late Season																		
PLS 179	70	1530	14-15	Afila	3.70	22-24	2	R ¹					R	R	R			
Recruit	70	1530	15-16	Afila	3.85	22-28	2-3	R ¹ , R ² , R ³	T		T		R	R				
PLS 595	71	1530	14	Afila	3.60	28-32	2	R ¹						R	T			
PLS 648	72	1550	14-15	Afila	3.70	24-28	2	R ¹ , R ²						R				
Genie	73	1580		Afila				R ¹						R				
Dancer	73	1580	15-16	Afila	3.20	29-31	3-4	R ¹					R	R	T			
PLS 196	74	1600	16	Afila	3.60	28-32	2	R ¹ , R ²	T					R	T			

**PROUDLY FAMILY OWNED
AND OPERATED SINCE
1948**

TRIAL LOCATIONS

We have three primary trial locations in the United States and one in Canada. Each location allows us to see how our varieties perform in different growing climates. Each area has different customer bases who are looking for unique requirements.



-  PureLineSeed
-  @purelineseeds
-  @PureLineSeeds
-  info@purelineseed.com
-  pure-line-seeds-inc



 PureLine Seeds, Inc